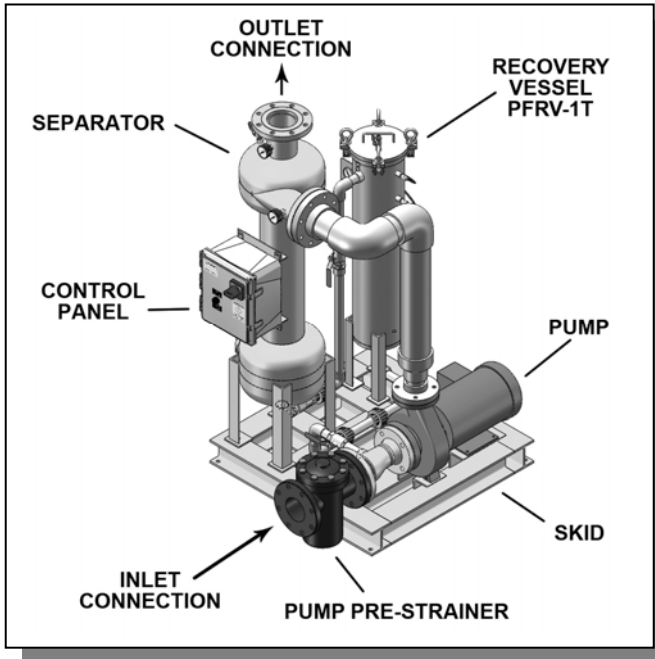




PUROFLUX CORPORATION

ENGINEERING • MANUFACTURING • SERVICE

PF63-040(B) SPECIFICATION SHEET PACKAGE RECOVERY SYSTEM



SPECIFICATIONS	PF63-040(B)
Flow Rate	400 gpm
Pump Motor	10 hp
Inlet Connection	4" flng
Outlet Connection	4" flng
Separator Model	PF61-040
Separator Purge	Continuous
Recovery Vessel Model	PFRV-1T
System Volume	26 gal
Est. Weight, Dry	755 lbs
Est. Weight, Operating	983 lbs

- Removes particulate as low as 45 microns
- 150 psi working pressure

- Fully assembled skid package
- One year limited warranty

SYSTEM COMPONENTS

Separator :

- PF61-040 - 4" flanged separator
- Fusion bonded polyester coated vessel
- 1/4" Manual air bleed valve
- Inlet / Outlet pressure gauges

Pump :

- Close coupled, end suction centrifugal pump
- Cast iron pre-strainer w/ removable SST basket
- 3450 rpm, TEFC motor

Skid :

- Fusion bonded polyester coated carbon steel

Recovery Vessel :

- 304 Stainless steel vessel with hinged eye bolt cover
- Stainless steel support basket w/ 25 micron bag
- Pressure differential indicator
- Automatic flow controller & isolation ball valves

Electrical Controls :

- NEMA 4X fiberglass enclosure
- Motor overload/short circuit protection
- Pump Hand-Off-Auto switch

Interconnecting Pipe :

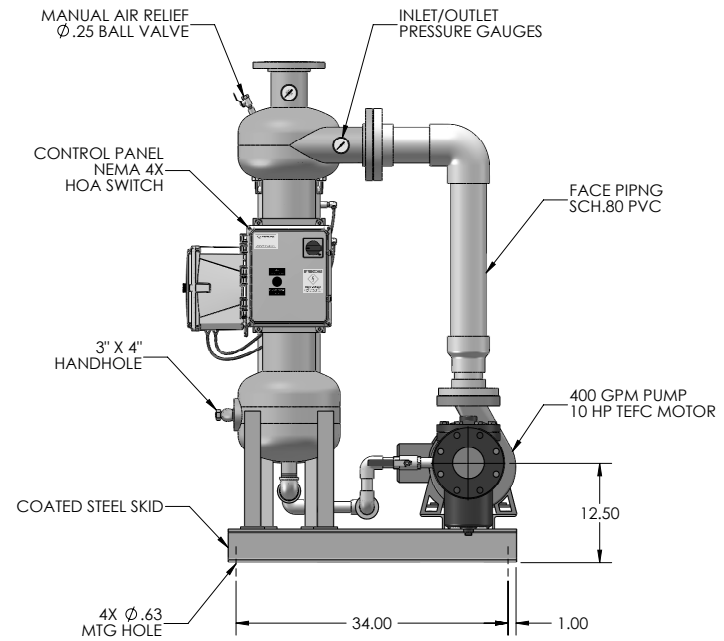
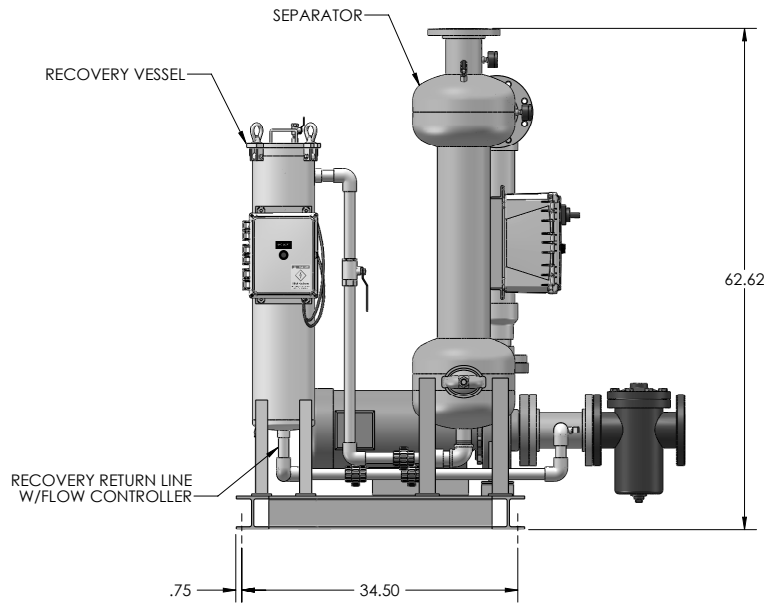
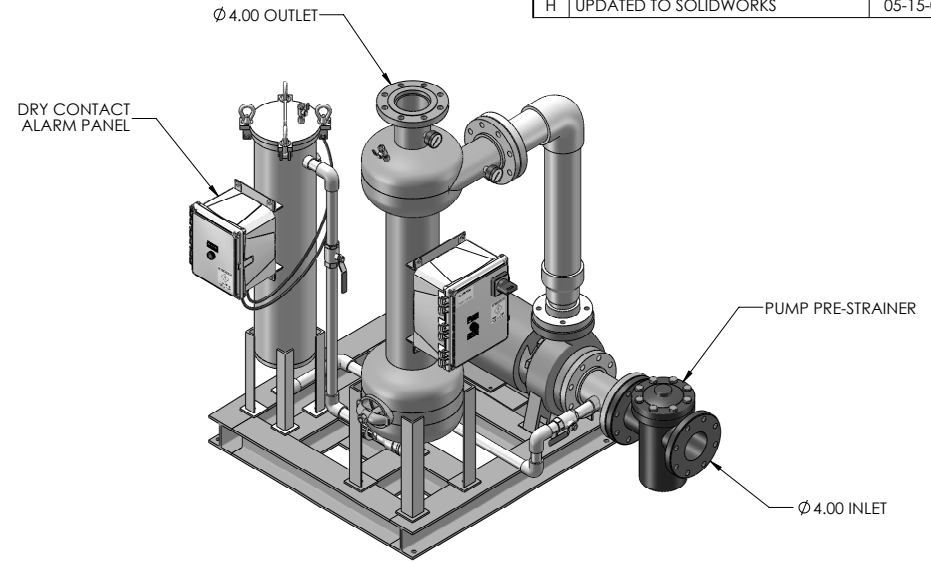
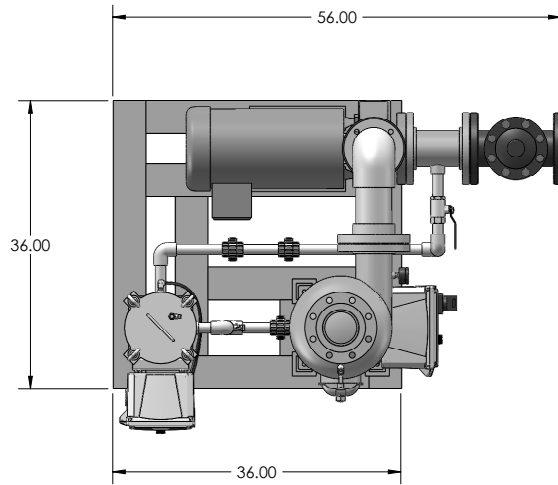
- Sch.80 PVC piping

Options: Dry Contact for Alarm, Auto Purge, Removable Dome, 22 1/2° profile

NOTES: UNLESS OTHERWISE SPECIFIED

1. DIMENSIONS ARE IN INCHES
2. DIMENSIONS MAY VARY SLIGHTLY - DO NOT USE FOR CONSTRUCTION
3. SEPARATOR SYSTEM IS RATED FOR 150 PSI WORKING PRESSURE

REVISIONS			
REV	DESCRIPTION	DATE	APPROVED
H	UPDATED TO SOLIDWORKS	05-15-09	D.L.



UNLESS OTHERWISE SPECIFIED DIMENSIONS ARE IN INCHES TOLERANCES: FRACTIONAL ± ANGULAR: MACH ± BEND ± TWO PLACE DECIMAL ± THREE PLACE DECIMAL ± INTERPRET GEOMETRIC TOLERANCING PER: MATERIAL FINISH NEXT ASSY APPLICATION		PROJ. NO. DRAWN CHECKED DESIGN APPROVED MFG APPROVED QA APPROVED RELEASE DATE	PF-63-040(B) SEPARATOR PACKAGE 400 GPM - WITH RECOVERY VESSEL PUROFLUX CORPORATION PHONE: (805) 579-0216 FAX: (805) 579-4005 WEBSITE: www.puroflux.com
PROPRIETARY AND CONFIDENTIAL THE INFORMATION CONTAINED IN THIS DRAWING IS THE SOLE PROPERTY OF PUROFLUX CORPORATION. ANY REPRODUCTION IN PART OR AS A WHOLE WITHOUT THE WRITTEN PERMISSION OF PUROFLUX CORPORATION IS PROHIBITED.		SCALE NONE	SIZE C
DO NOT SCALE DRAWING		11-05-02	DWG NO. 631-0112 REV H
		SHEET 1 OF 3	

4

3

2

1

REVISIONS			
REV	DESCRIPTION	DATE	APPROVED
B	REVISED CR DESG	06-12-08	K.C.

NOTICE OF PROPRIETARY RIGHTS

This document contains confidential technical data, including trade secrets, proprietary to Puroflux, Inc. Disclosure of this data to you is expressly conditioned upon your assent that its use is limited to use within your company only (and does not include manufacture or processing uses). Any other use is strictly prohibited without the prior written consent of Puroflux, Inc.

D

D

C

C

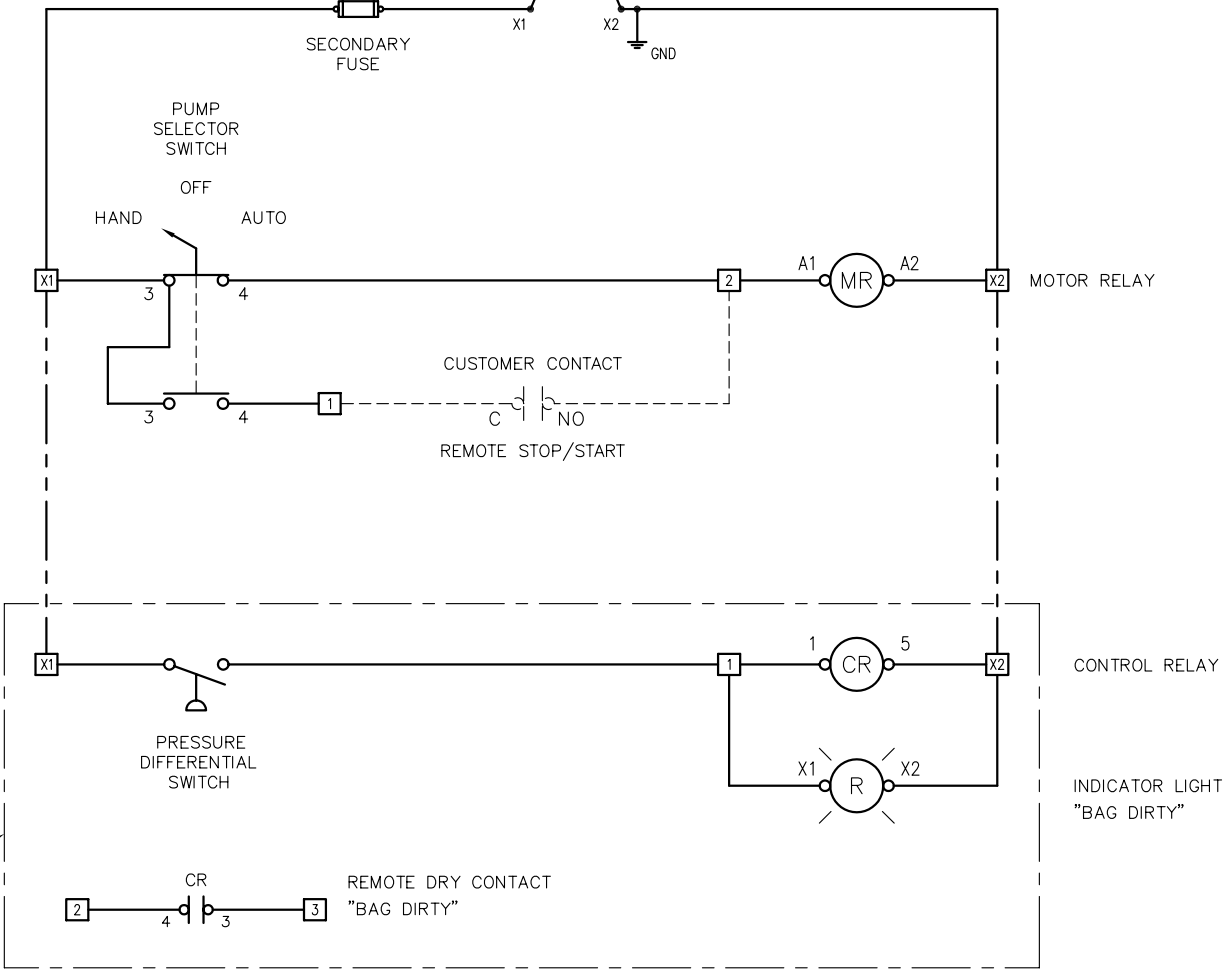
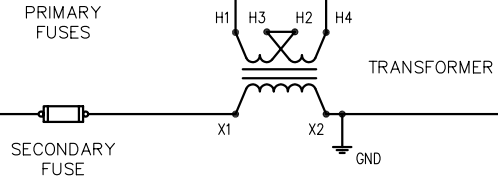
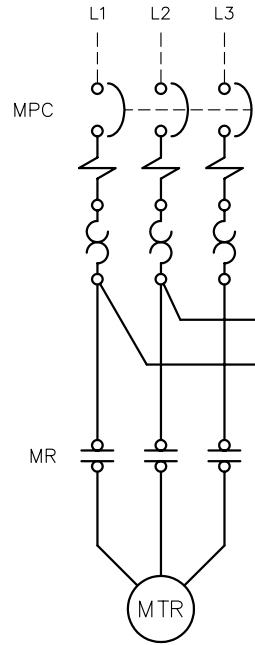
B

B

A

A

460V/3 ϕ /60 Hz



ENCLOSURE LOCATED ON RECOVERY VESSEL

NOTES: UNLESS OTHERWISE SPECIFIED

MATERIAL	UNLESS OTHERWISE NOTED	PROJ. NO.	PF-63 SERIES : 460V/3 ϕ /60 HZ
	DIMENSIONS ARE IN INCHES DO NOT SCALE THIS DRAWING	DRAWN	K. CARTER
	INTERPRET DRAWING PER APPLICABLE STANDARDS	CHECKED	
	DECIMALS .XX ± - ± - ANGLES ° SURFACE FINISH .XXX ± - THREADS PER NBS HANDBOOK-H28 CONCENTRICITIES .010 TR BREAK CORNERS .005-.015 INTERNAL RADII .015-.030	DESIGN APPROVED	MFG APPROVED
NEXT ASSEMBLY	QA APPROVED	RELEASE DATE	06-18-04
APPLICATION	SCALE	CAGE CODE	DWG NO. 632-0045
			REV B

DWG. NO. 632-0045
 SH 1
 REV B

4

3

2

1