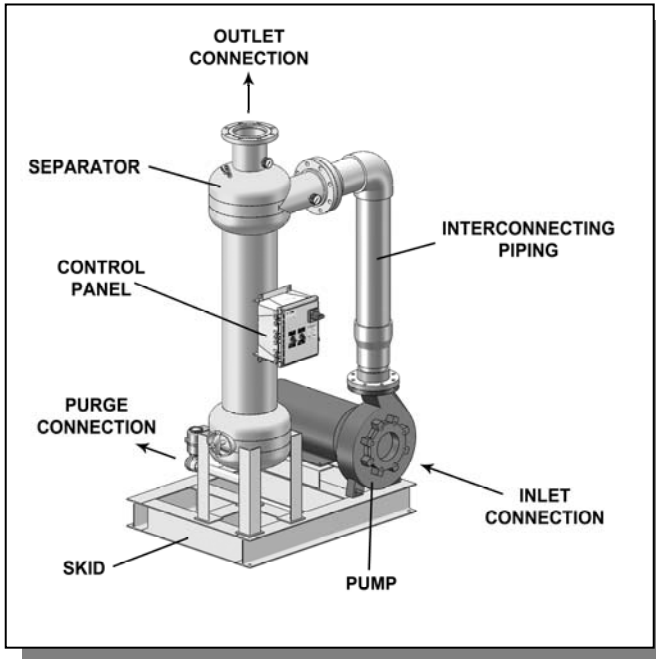




## PF64-060(B) SPECIFICATION SHEET PUMP PACKAGE SYSTEM



SPECIFICATIONS	PF64-060(B)
Flow Rate	1200 gpm
System Inlet Connection	8" flng
System Outlet Connection	6" flng
Purge Connection	1 1/2" fpt
Separator Model	PF61-060
Separator Purge	Automatic
Pump Motor	25 hp
Volume	40 gal
Est. Weight, Dry	1300 lbs
Est. Weight, Operating	1632 lbs

- Removes particulate as low as 45 microns
- 150 psi working pressure

- Fully assembled skid package
- One year limited warranty

### SYSTEM COMPONENTS

#### Separator :

- PF61-060 - 6" flanged separator
- Fusion bonded polyester coated vessel
- 1/4" Manual air bleed valve
- 0 to 160 psi gauges on influent / effluent

#### Electrical Controls :

- NEMA 4X fiberglass enclosure
- Motor overload/short circuit protection
- Hand-Off-Auto switches

#### Pump :

- Close coupled, end suction centrifugal pump
- 1750 rpm, TEFC motor

#### Automatic Purge :

- Electrically actuated industrial grade ball valve
- Adjustable purge timer

#### Skid :

- Fusion bonded polyester coated carbon steel

#### Interconnecting Pipe :

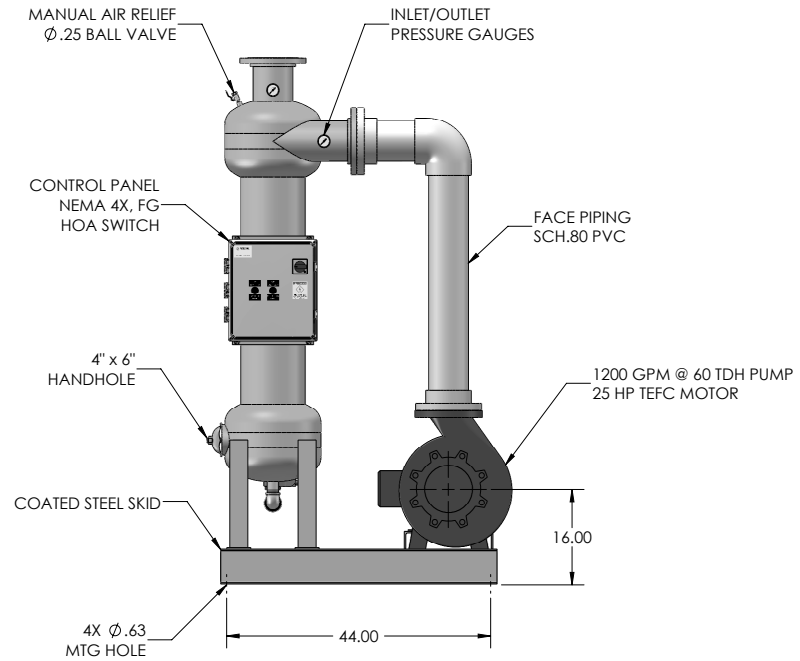
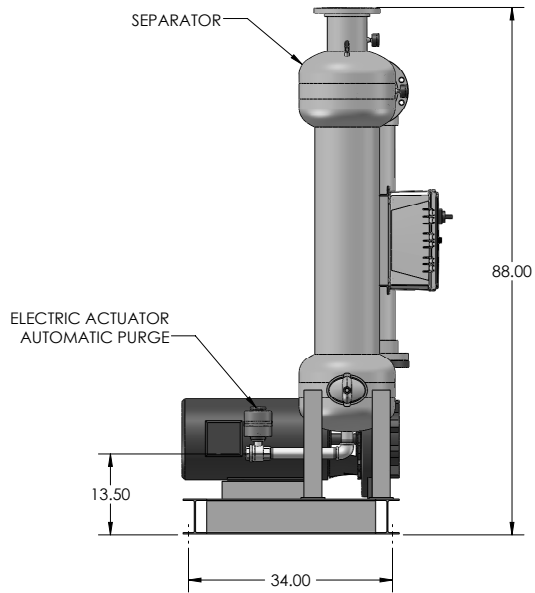
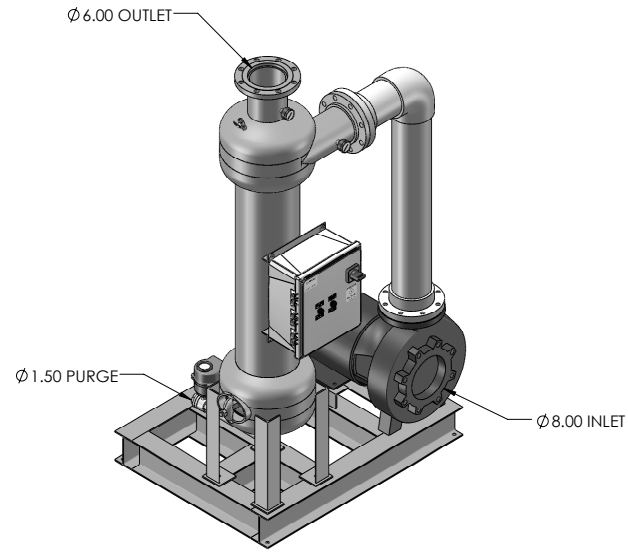
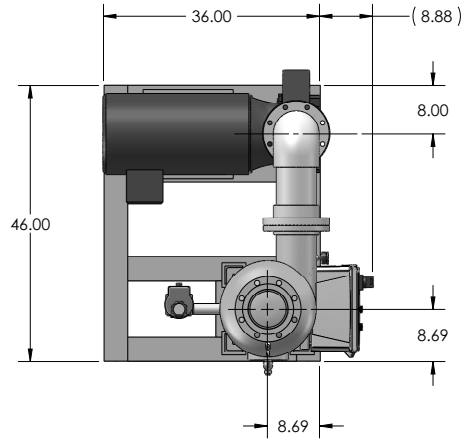
- Sch.80 PVC piping

**Options:** Cast Iron Pump Pre-Strainer, Manual Purge, Removable Dome, 22 1/2" profile

NOTES: UNLESS OTHERWISE SPECIFIED

1. DIMENSIONS ARE IN INCHES
2. DIMENSIONS MAY VARY SLIGHTLY - DO NOT USE FOR CONSTRUCTION
3. SEPARATOR SYSTEM IS RATED FOR 150 PSI WORKING PRESSURE
4. UNIT AVAILABLE WITH OPTIONAL PUMP PRE-STRAINER

REVISIONS			
REV	DESCRIPTION	DATE	APPROVED
A	REVISED PUMP	09-18-09	D. LUNA

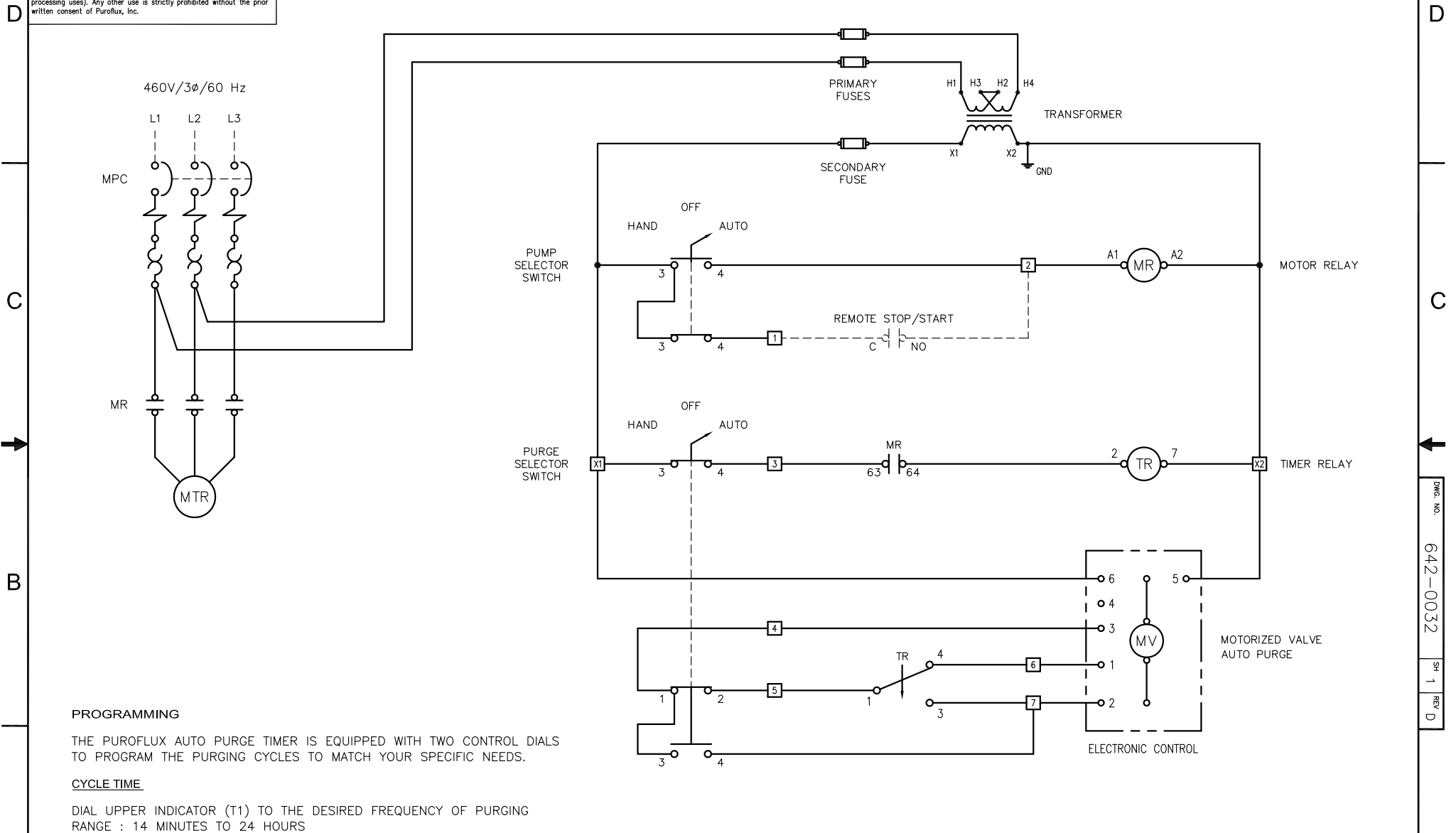


PROPRIETARY AND CONFIDENTIAL THE INFORMATION CONTAINED IN THIS DRAWING IS THE SOLE PROPERTY OF PUROFLUX CORPORATION. ANY REPRODUCTION IN PART OR AS A WHOLE WITHOUT THE WRITTEN PERMISSION OF PUROFLUX CORPORATION IS PROHIBITED.	UNLESS OTHERWISE SPECIFIED DIMENSIONS ARE IN INCHES TOLERANCES: FRACTIONAL ± ANGULAR: MACH ± BEND ± TWO PLACE DECIMAL ± THREE PLACE DECIMAL ±	PROJ. NO.	PF-64-060(B) AP SEPARATOR PACKAGE 1200 GPM - W/SKID MOUNTED PUMP	
	INTERPRET GEOMETRIC TOLERANCING PER:	DRAWN	D. LUNA	PHONE: (805) 579-0216 FAX: (805) 579-6005 WEBSITE: www.puroflux.com
	MATERIAL	CHECKED	DESIGN APPROVED	SCALE
	FINISH	MFG APPROVED	QA APPROVED	SIZE
	APPLICATION	DO NOT SCALE DRAWING	RELEASE DATE	05-28-09

<b>PUROFLUX CORPORATION</b>		DWG NO. <b>641-0289</b>	REV <b>A</b>
CAGE CODE	NONE	SHEET 1 OF 2	1

**NOTICE OF PROPRIETARY RIGHTS**  
 This document contains confidential technical data, including trade secrets, proprietary to Puroflux, Inc. Disclosure of this data to you is expressly conditioned upon your assent that its use is limited to use within your company only (and does not include manufacture or processing uses). Any other use is strictly prohibited without the prior written consent of Puroflux, Inc.

REVISIONS			
REV	DESCRIPTION	DATE	APPROVED
D	REVISED VALBIA ACTUATOR	10-21-11	K.C.



**PROGRAMMING**

THE PUROFLUX AUTO PURGE TIMER IS EQUIPPED WITH TWO CONTROL DIALS TO PROGRAM THE PURGING CYCLES TO MATCH YOUR SPECIFIC NEEDS.

CYCLE TIME

DIAL UPPER INDICATOR (T1) TO THE DESIRED FREQUENCY OF PURGING  
 RANGE : 14 MINUTES TO 24 HOURS  
 FACTORY SETTING : 25% (APPROX EVERY 6 HRS)

PURGING TIME

DIAL LOWER INDICATOR (T2) TO THE DESIRED DURATION OF PURGING  
 RANGE : 6 TO 60 SECONDS  
 FACTORY SETTING : 35% (APPROX 20 SEC)

MATERIAL	UNLESS OTHERWISE NOTED	PROJ. NO.	WIRING DIAGRAM : 460V/3Ø/60 HZ	
	DIMENSIONS ARE IN INCHES	DRAWN K. CARTER	AUTO PURGE PANEL : REMOTE STOP/START	
	DO NOT SCALE THIS DRAWING	CHECKED		
	INTERPRET DRAWING PER APPLICABLE STANDARDS	DESIGN APPROVED	1357 KUEHNER DRIVE SIMI VALLEY CA 93063 PHONE: (805) 579-0216 FAX: (805) 579-6005	
HEAT TREAT	DECIMALS ANGLES SURFACE FINISH	MFG APPROVED	SIZE C	CAGE CODE
	.XX ± - ± -	QA APPROVED	DWG NO. 642-0032	REV D
FINISH	THREADS PER NBS HANDBOOK-H28	RELEASE DATE 08-23-02	SCALE NONE	SHEET 1 OF 1
	.010 TR			
NEXT ASSEMBLY APPLICATION	BREAK CORNERS .005-.015 INTERNAL RADI .015-.030			

DWG. NO. 642-0032  
 SH 1  
 REV D