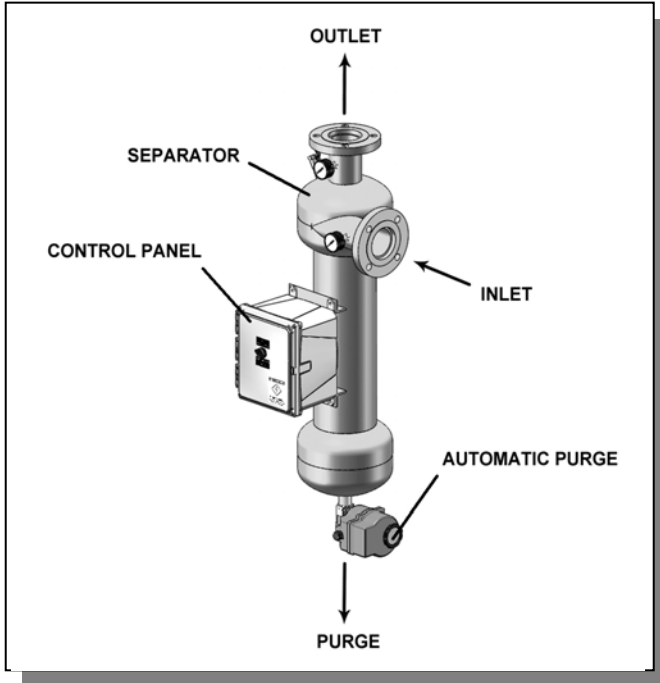




PUROFLUX CORPORATION

ENGINEERING • MANUFACTURING • SERVICE

PF61-030 SPECIFICATION SHEET – 3” FLANGED SEPARATOR



SPECIFICATIONS	PF61-030
Flow Range	160-315 gpm
Connections – Influent / Effluent	3” flg
Purge Outlet	1” fpt
Manual Air Bleed Valve	1/4” fpt
Volume	7 gal
Est. Weight, Dry	98 lbs
Est. Weight, Operating	156 lbs
Options:	
Manual Purge	
Wall Mounting Brackets / Legs	
Inspection Port	Consult Factory

- Carbon steel construction
- Fusion bonded polyester coating
- True tangential entry
- 150 psi working pressure
- Industrial grade manual purge valve
- 0 to 160 psi gauges on influent / effluent
- 1/4” manual air bleed valve
- Five year limited warranty

PRESSURE DROP vs. FLOW RATE							
Pressure Drop	3 psi	4 psi	6 psi	8 psi	10 psi	12 psi	CV Factor
Flow (gpm)*	158	183	224	259	289	317	91.5

* (Flow rate / CV values may vary slightly)

To determine the approximate pressure drop at flow rates not shown in this chart, use the following formula:

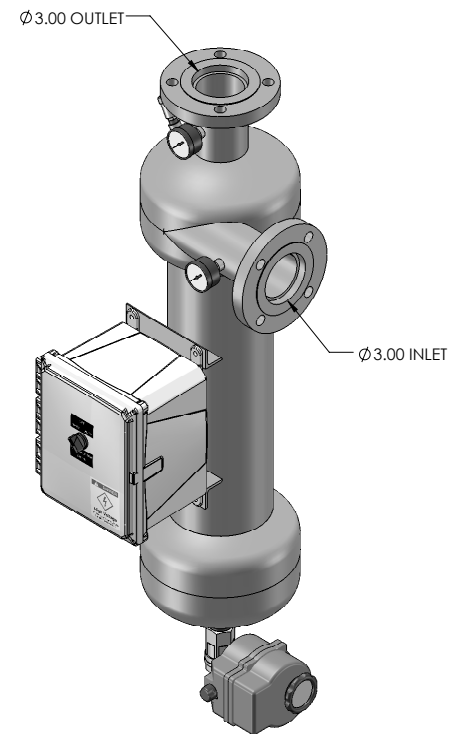
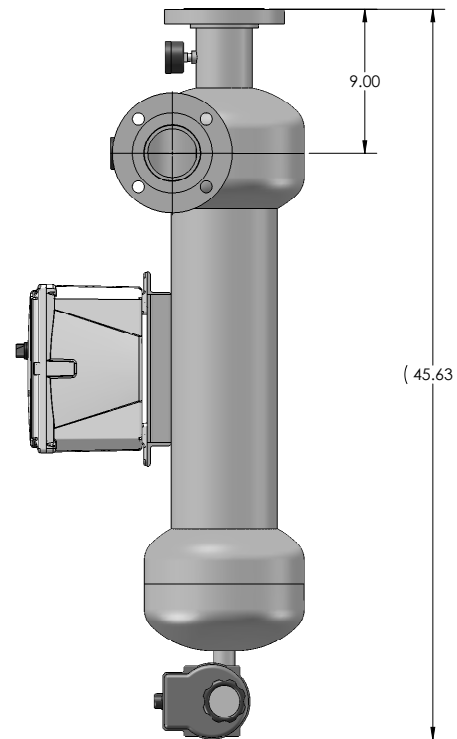
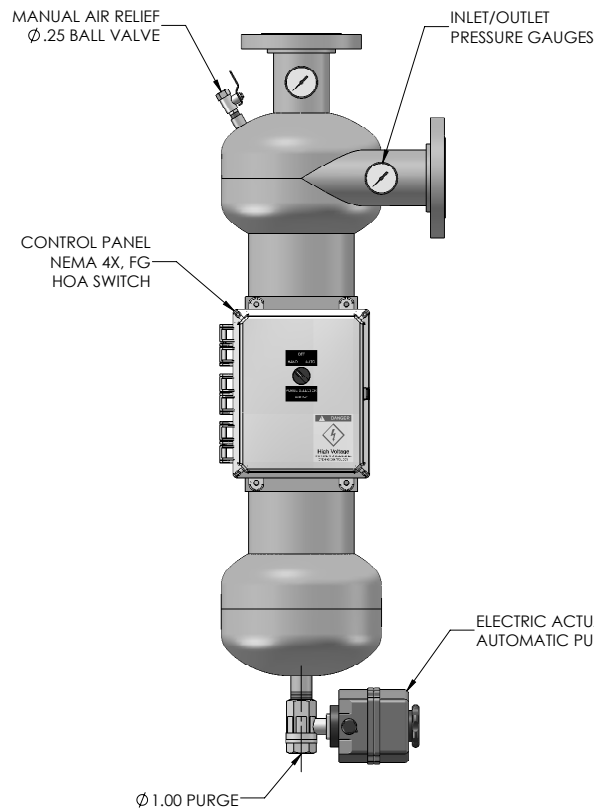
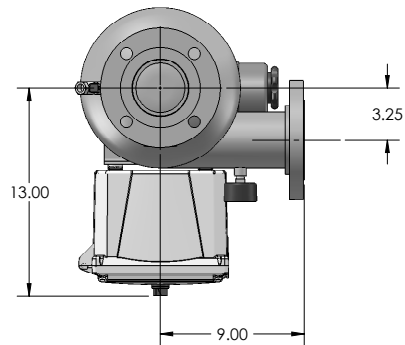
$$\Delta P = (\text{FLOW RATE} / \text{CV})^2$$

CV Factor : CV is defined as the flow in gallons per minute (GPM) that will produce a one pound pressure drop across the separator.

NOTES: UNLESS OTHERWISE SPECIFIED

1. DIMENSIONS ARE IN INCHES
2. DIMENSIONS MAY VARY SLIGHTLY - DO NOT USE FOR CONSTRUCTION
3. SEPARATOR SYSTEM IS RATED FOR 150 PSI WORKING PRESSURE
4. VESSEL CONSTRUCTION: CARBON STEEL TANK
EPOXY COATED EXTERIOR

REVISIONS			
REV	DESCRIPTION	DATE	APPROVED
D	UPDATED TO SOLIDWORKS	06-11-09	D.L.



UNLESS OTHERWISE SPECIFIED		PROJ. NO.	PF61-030-AP HYDROCYCLONE SEPARATOR	
DIMENSIONS ARE IN INCHES		DRAWN	K. CARTER	
TOLERANCES:		CHECKED	160-315 GPM - AUTO PURGE	
FRACTIONAL ±		DESIGN APPROVED	PUROFLUX CORPORATION	
ANGULAR: MACH ± BEND ±		MFG APPROVED		
TWO PLACE DECIMAL ±		QA APPROVED	SIZE	PHONE: (805) 579-0216
THREE PLACE DECIMAL ±		RELEASE DATE	CAGE CODE	FAX: (805) 579-6005
INTERPRET GEOMETRIC TOLERANCING PER:		APPLICATION	DWG. NO.	WEBSITE: www.puroflux.com
MATERIAL		DO NOT SCALE DRAWING	611-0021	REV D
FINISH			SCALE	SHEET 1 OF 2
NEXT ASSY			NONE	

PROPRIETARY AND CONFIDENTIAL
THE INFORMATION CONTAINED IN THIS
DRAWING IS THE SOLE PROPERTY OF
PURIFLUX CORPORATION. ANY
REPRODUCTION IN PART OR AS A WHOLE
WITHOUT THE WRITTEN PERMISSION OF
PURIFLUX CORPORATION IS
PROHIBITED.

4

3

2

1

NOTICE OF PROPRIETARY RIGHTS

This document contains confidential technical data, including trade secrets, proprietary to Puroflux, Inc. Disclosure of this data to you is expressly conditioned upon your assent that its use is limited to use within your company only (and does not include manufacture or processing uses). Any other use is strictly prohibited without the prior written consent of Puroflux, Inc.

REVISIONS			
REV	DESCRIPTION	DATE	APPROVED
F	REVISED VALBIA WIRING	11-14-11	K.C.

PROGRAMMING

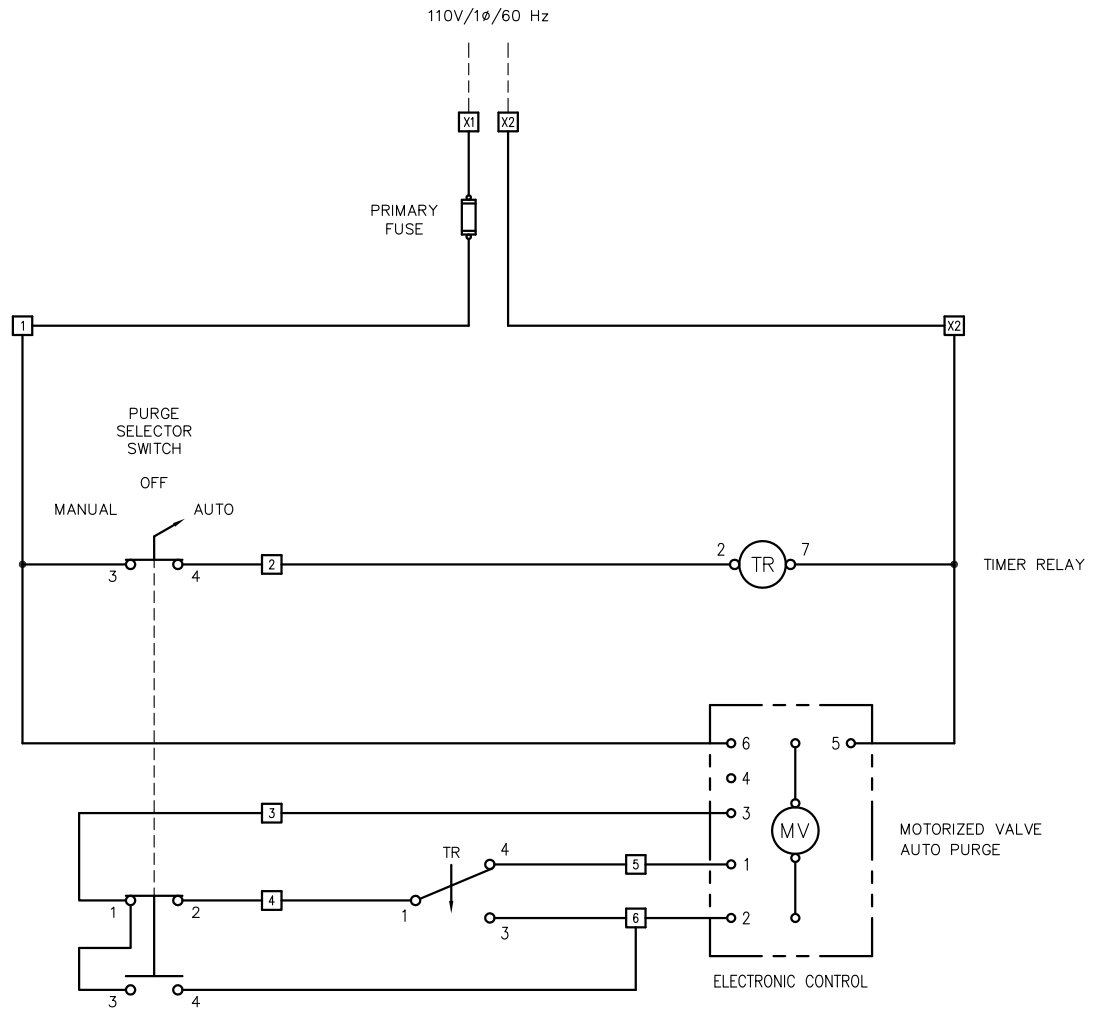
THE PUROFLUX AUTO PURGE TIMER IS EQUIPPED WITH TWO CONTROL DIALS TO PROGRAM THE PURGING CYCLES TO MATCH YOUR SPECIFIC NEEDS.

CYCLE TIME

DIAL UPPER INDICATOR (T1) TO THE DESIRED FREQUENCY OF PURGING
RANGE : 14 MINUTES TO 24 HOURS
FACTORY SETTING : 25% (APPROX EVERY 6 HRS)

PURGING TIME

DIAL LOWER INDICATOR (T2) TO THE DESIRED DURATION OF PURGING
RANGE : 6 TO 60 SECONDS
FACTORY SETTING : 35% (APPROX 20 SEC)



1 ACTUAL WIRING MAY VARY DEPENDING UPON ELECTRIC ACTUATOR MODEL NUMBER

NOTES: UNLESS OTHERWISE SPECIFIED

MATERIAL	UNLESS OTHERWISE NOTED DIMENSIONS ARE IN INCHES DO NOT SCALE THIS DRAWING	PROJ. NO.	WIRING DIAGRAM: 110V/1φ/60 HZ AUTOMATIC PURGE PANEL	
HEAT TREAT	INTERPRET DRAWING PER APPLICABLE STANDARDS	DRAWN	K. CARTER	
FINISH	DECIMALS .XX ± - ± - ANGLES ± - SURFACE XXX ± -	CHECKED		
NEXT ASSEMBLY	THREADS PER NBS HANDBOOK-H28	DESIGN APPROVED		
APPLICATION	CONCENTRICITIES .010 TR BREAK CORNERS .005-.015 INTERNAL RADI .015-.030	MFG APPROVED		
		QA APPROVED	SIZE	CAGE CODE
		RELEASE DATE	C	
		02-01-02	DWG. NO.	612-0002
			SCALE	NONE
			SHEET	1 OF 1

DWG. NO. 612-0002 SH 1 REV F

4

3

2

1