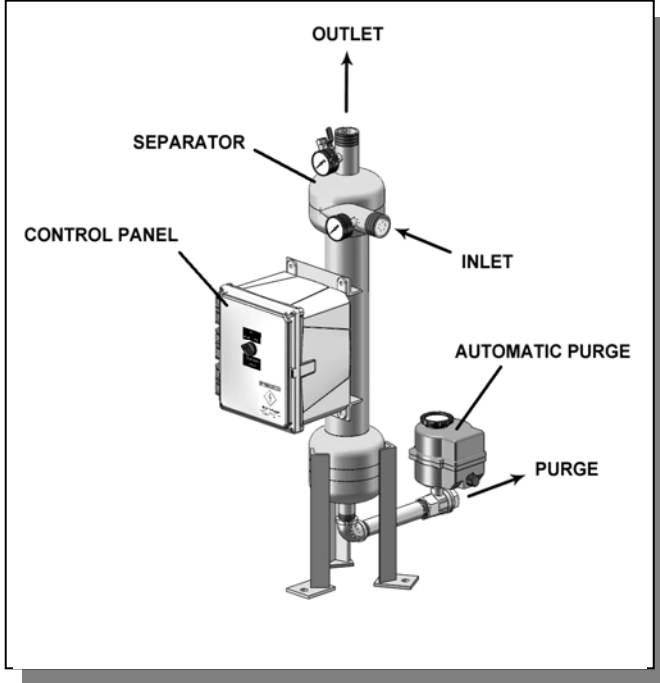




# PUROFLUX CORPORATION

ENGINEERING • MANUFACTURING • SERVICE

## PF61-010 SPECIFICATION SHEET – 1" THREADED SEPARATOR



SPECIFICATIONS	PF61-010
Flow Range	20-45 gpm
Connections – Influent / Effluent	1" mpt
Purge Outlet	3/4" fpt
Manual Air Bleed Valve	1/4" fpt
Volume	2 gal
Est. Weight, Dry	25 lbs
Est. Weight, Operating	38 lbs
Options:	
Manual Purge	
Wall Mounting Brackets	
Inspection Port	Consult Factory

- Carbon steel construction
- Fusion bonded polyester coating
- True tangential entry
- 150 psi working pressure
- Industrial grade manual purge valve
- 0 to 160 psi gauges on influent / effluent
- 1/4" manual air bleed valve
- Five year limited warranty

PRESSURE DROP vs. FLOW RATE							
Pressure Drop	3 psi	4 psi	6 psi	8 psi	10 psi	12 psi	CV Factor
Flow (gpm)*	22	25	31	36	40	44	12.7

\*(Flow rate / CV values may vary slightly)

To determine the approximate pressure drop at flow rates not shown in this chart, use the following formula:

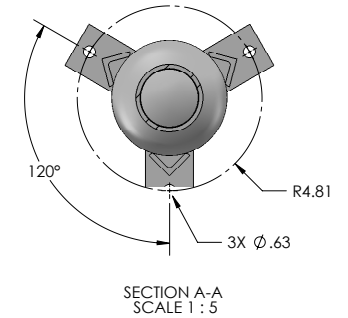
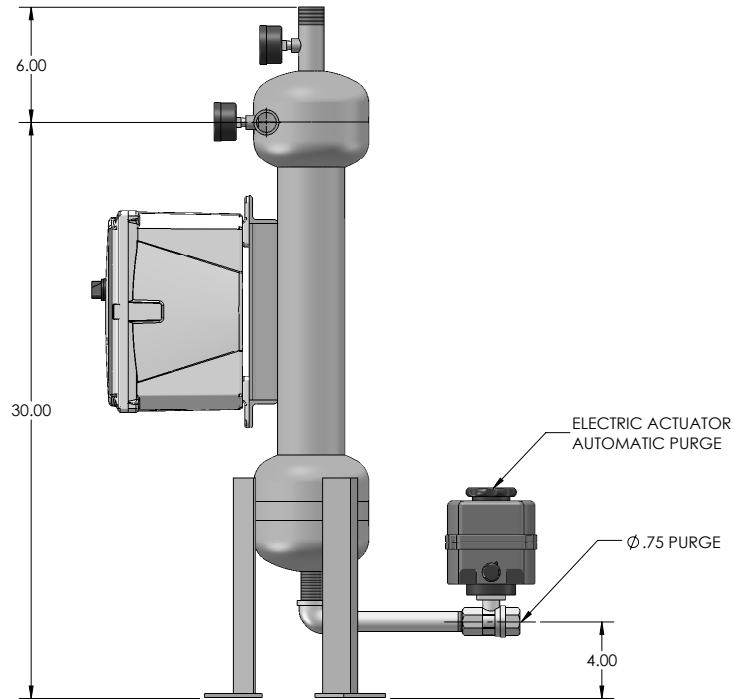
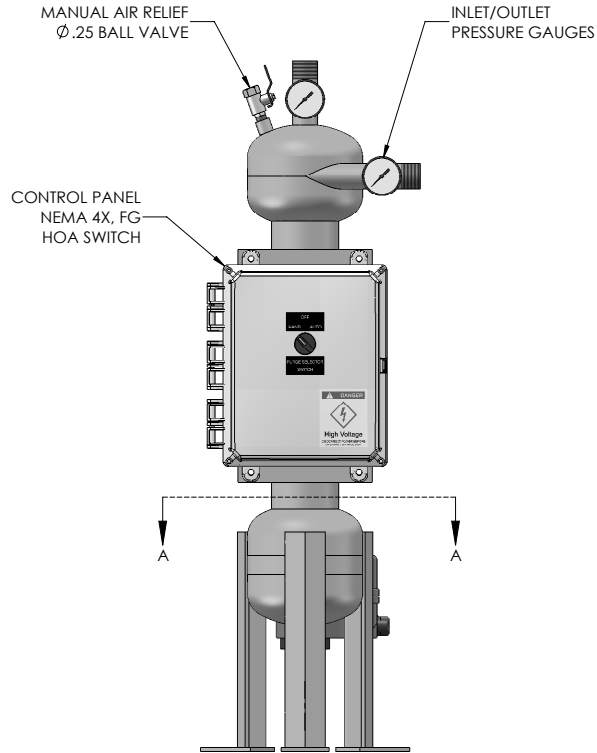
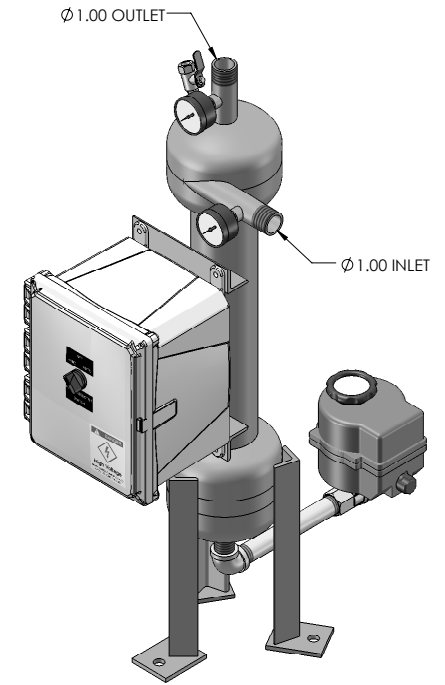
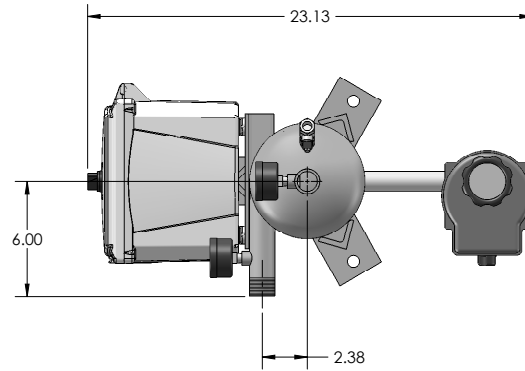
$$\Delta P = (\text{FLOW RATE} / \text{CV})^2$$

CV Factor : CV is defined as the flow in gallons per minute (GPM) that will produce a one pound pressure drop across the separator.

NOTES: UNLESS OTHERWISE SPECIFIED

1. DIMENSIONS ARE IN INCHES
2. DIMENSIONS MAY VARY SLIGHTLY - DO NOT USE FOR CONSTRUCTION
3. SEPARATOR SYSTEM IS RATED FOR 150 PSI WORKING PRESSURE
4. VESSEL CONSTRUCTION: CARBON STEEL TANK  
EPOXY COATED EXTERIOR

REVISIONS			
REV	DESCRIPTION	DATE	APPROVED
B	UPDATED TO SOLIDWORKS	06-16-09	D.L.



UNLESS OTHERWISE SPECIFIED		PROJ. NO.	PF61-010-AP HYDROCYCLONE SEPARATOR	
DIMENSIONS ARE IN INCHES		DRAWN	K. CARTER	
TOLERANCES:		CHECKED		
FRACTIONAL ±		DESIGN APPROVED		
ANGULAR: MACH ± BEND ±		MFG APPROVED		
TWO PLACE DECIMAL ±		QA APPROVED		
THREE PLACE DECIMAL ±		RELEASE DATE	06-14-00	
INTERPRET GEOMETRIC TOLERANCING PER:		SCALE	NONE	
MATERIAL		SIZE	C	
NEXT ASSY		CAGE CODE	DWG NO. 611-0141	
FINISH		SCALE	NONE	
APPLICATION		DO NOT SCALE DRAWING	SHEET 1 OF 2	

PROPRIETARY AND CONFIDENTIAL  
THE INFORMATION CONTAINED IN THIS DRAWING IS THE SOLE PROPERTY OF PUROFLUX CORPORATION. ANY REPRODUCTION IN PART OR AS A WHOLE WITHOUT THE WRITTEN PERMISSION OF PUROFLUX CORPORATION IS PROHIBITED.

**PUROFLUX CORPORATION**  
PHONE: (805) 579-0216  
FAX: (805) 579-4005  
WEBSITE: www.puroflux.com

4

3

2

1

**NOTICE OF PROPRIETARY RIGHTS**

This document contains confidential technical data, including trade secrets, proprietary to Puroflux, Inc. Disclosure of this data to you is expressly conditioned upon your assent that its use is limited to use within your company only (and does not include manufacture or processing uses). Any other use is strictly prohibited without the prior written consent of Puroflux, Inc.

REVISIONS			
REV	DESCRIPTION	DATE	APPROVED
F	REVISED VALBIA WIRING	11-14-11	K.C.

**PROGRAMMING**

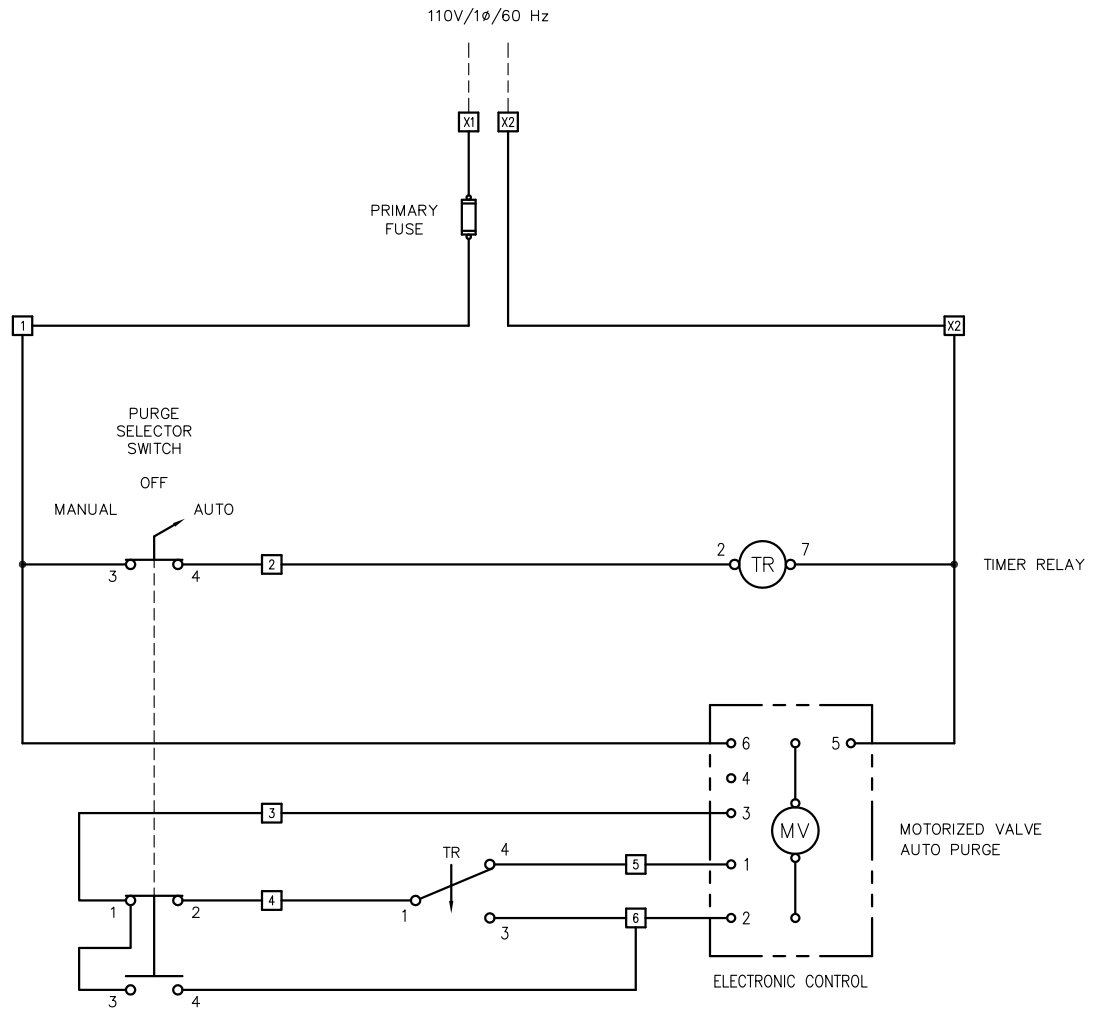
THE PUROFLUX AUTO PURGE TIMER IS EQUIPPED WITH TWO CONTROL DIALS TO PROGRAM THE PURGING CYCLES TO MATCH YOUR SPECIFIC NEEDS.

CYCLE TIME

DIAL UPPER INDICATOR (T1) TO THE DESIRED FREQUENCY OF PURGING  
RANGE : 14 MINUTES TO 24 HOURS  
FACTORY SETTING : 25% (APPROX EVERY 6 HRS)

PURGING TIME

DIAL LOWER INDICATOR (T2) TO THE DESIRED DURATION OF PURGING  
RANGE : 6 TO 60 SECONDS  
FACTORY SETTING : 35% (APPROX 20 SEC)



1 ACTUAL WIRING MAY VARY DEPENDING UPON ELECTRIC ACTUATOR MODEL NUMBER

NOTES: UNLESS OTHERWISE SPECIFIED

MATERIAL	UNLESS OTHERWISE NOTED DIMENSIONS ARE IN INCHES DO NOT SCALE THIS DRAWING	PROJ. NO.	WIRING DIAGRAM: 110V/1φ/60 HZ AUTOMATIC PURGE PANEL	
HEAT TREAT	INTERPRET DRAWING PER APPLICABLE STANDARDS	DRAWN	K. CARTER	
FINISH	DECIMALS .XX ± - ± - ANGLES ± - SURFACE XXX ± - THREADS PER NBS HANDBOOK-H28 CONCENTRICITIES .010 TR BREAK CORNERS .005-.015 INTERNAL RADI .015-.030	CHECKED		
		DESIGN APPROVED		
NEXT ASSEMBLY		MFG APPROVED		
APPLICATION		QA APPROVED		
		RELEASE DATE	02-01-02	
		SIZE	CAGE CODE	DWG NO. 612-0002
		SCALE	NONE	REV F
				SHEET 1 OF 1

DWG. NO. 612-0002 SH 1 REV F

4

3

2

1