

4

3

2

1

NOTICE OF PROPRIETARY RIGHTS

This document contains confidential technical data, including trade secrets, proprietary to Puroflux, Inc. Disclosure of this data to you is expressly conditioned upon your assent that its use is limited to use within your company only (and does not include manufacture or processing uses). Any other use is strictly prohibited without the prior written consent of Puroflux, Inc.

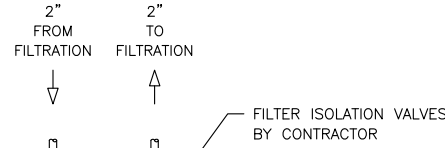
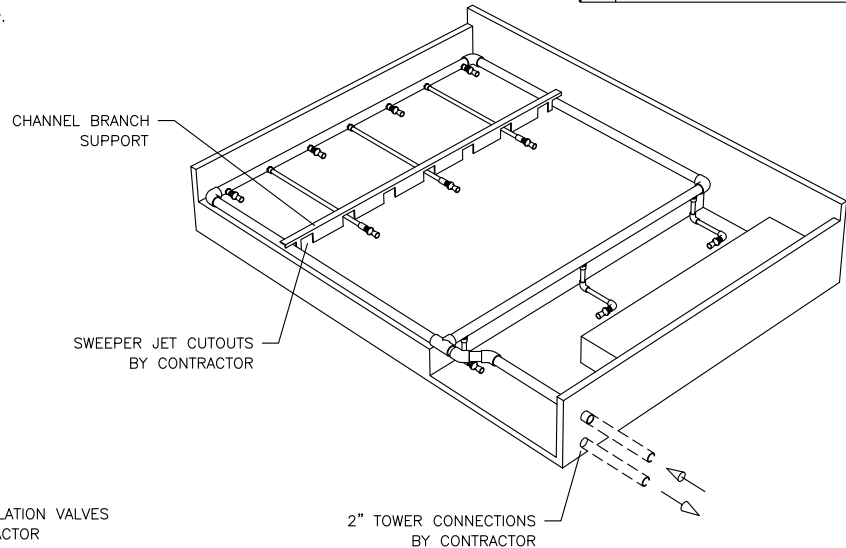
SUBMITTAL DRAWING

This drawing is submitted for spacial & illustrative purposes only. Do not pre-plumb to these dimensions.

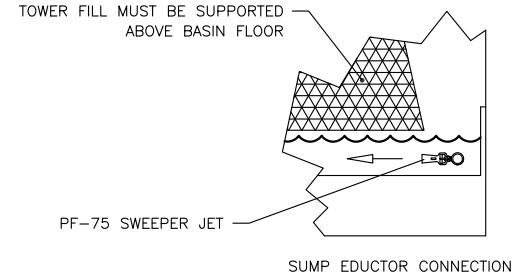
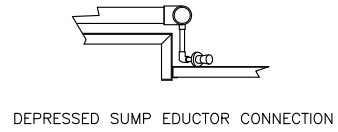
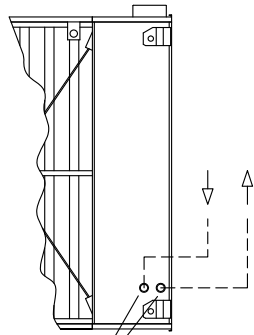
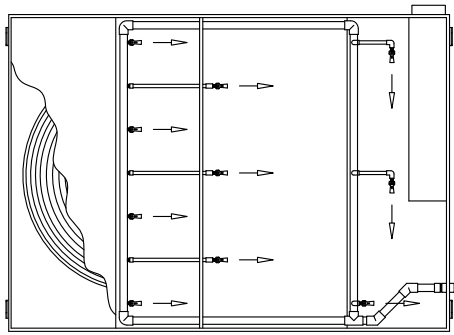
| REVISIONS | | | |
|-----------|-------------|------|----------|
| REV | DESCRIPTION | DATE | APPROVED |
| | | | |

NOTES:

1. DRAWING NOT TO SCALE
2. PLUMBING SHOWN FOR ILLUSTRATION PURPOSES ONLY - ACTUAL PLUMBING MAY VARY
3. FLOODED SUCTION REQUIRED PRIOR TO STARTING SYSTEM - PUMP CHECK VALVE MAY BE REQUIRED : SUPPLIED BY CONTRACTOR
4. ALL PIPE SECTIONS TO BE FIELD CUT TO PROPER LENGTH - BY CONTRACTOR
5. SWEEPER JETS MUST REMAIN SUBMERGED BELOW WATER LEVEL
6. TOWER FILL MUST BE SUPPORTED ABOVE BASIN FLOOR



EXTERNAL PIPING BY CONTRACTOR



| EQUIPMENT | FLOW RATE | HP | CONNECTION | JOB NAME |
|-----------|-----------|------|------------|--------------|
| PF-3030 | 100 GPM | 3 HP | 2 INCH | PUROFLUX REP |
| PF-63-015 | 80 GPM | 3 HP | 2 INCH | |
| PF-64-015 | 80 GPM | 3 HP | 2 INCH | |

| | |
|---------------------------|---|
| MATERIAL | UNLESS OTHERWISE NOTED DIMENSIONS ARE IN INCHES DO NOT SCALE THIS DRAWING |
| HEAT TREAT | INTERPRET DRAWING PER APPLICABLE STANDARDS |
| FINISH | DECIMALS ANGLES SURFACE FINISH .XX ± ± - .XXX ± - |
| NEXT ASSEMBLY APPLICATION | THREADS PER NBS HANDBOOK-H28 CONCENTRICITIES .010 TIR BREAK CORNERS .005-.015 INTERNAL RADII .015-.030 |

| | |
|-----------------|--|
| PROJ. NO. | SUMP SWEEPER PIPING LAYOUT BAC SERIES 1500 : 8.5' X 12' |
| DRAWN | |
| CHECKED | |
| DESIGN APPROVED | |
| MFG APPROVED | 2121 UNION PLACE SIMI VALLEY CA 93065 PHONE: (805) 579-0216 FAX: (805) 579-6005 |
| QA APPROVED | |
| RELEASE DATE | SCALE NONE |

| | | | |
|------------|-----------|----------|--------------|
| SIZE C | CAGE CODE | DWG. NO. | REV |
| SCALE NONE | | | SHEET 1 OF 1 |

4

3

2

1

D

D

C

C

B

B

A

A

DWG. NO.

SH

REV